

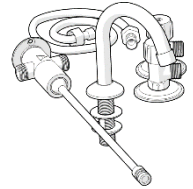
Product Installation Guidelines & Scope of Use

Version 1.1, 17 March 2025, Page 1 of 5
Document No.: 173.61.46.00

CP-BS Lead Safe™ Knee Operated Timeflow Valve w/ Regulator, Spout & Connection Kit

PRODUCT CODES:

- 173.61.46.00



SPECIFICATIONS

- Time flow taps are designed to operate at full mains pressure.
- The valve has a unique self-closing operation.
- The taps are made of chrome plated brass.
- Clean hygienic design.
- Water saving.
- Low maintenance and easy to operate.
- Lead Safe™ brass construction.*

IMPORTANT: All taps are tested in accordance with AS 3718 and leave our premises in good working order. Time may vary due to changes in temperature, pressure, flow rate and water quantity.

*Our Lead Safe™ product range is compliant with the Lead-Free Requirements of the NCC 2022 Vol. Three, Clause A5G4(2) and NSF/ANSI 372.

** Any flow controller incorporated in the outlet to be tightened to prevent removal by hand. As Per AS3718.

WARNINGS: Special attentions to be paid on notes, photos, images, or drawings of assembly steps marked with the warning symbol.



TECHNICAL DATA

Inlet (Knee Valve)		½" BSP - Male
Outlet		Aerator
Headwork		Time Flow Cartridge (15 seconds)
Working Pressure Range (kPa)	Min	100
	Max	500
Working Temperature Range (°C)	Min	5
	Max	65
Nominal Flow Rate (LPM)		4.29
Finish		Chrome

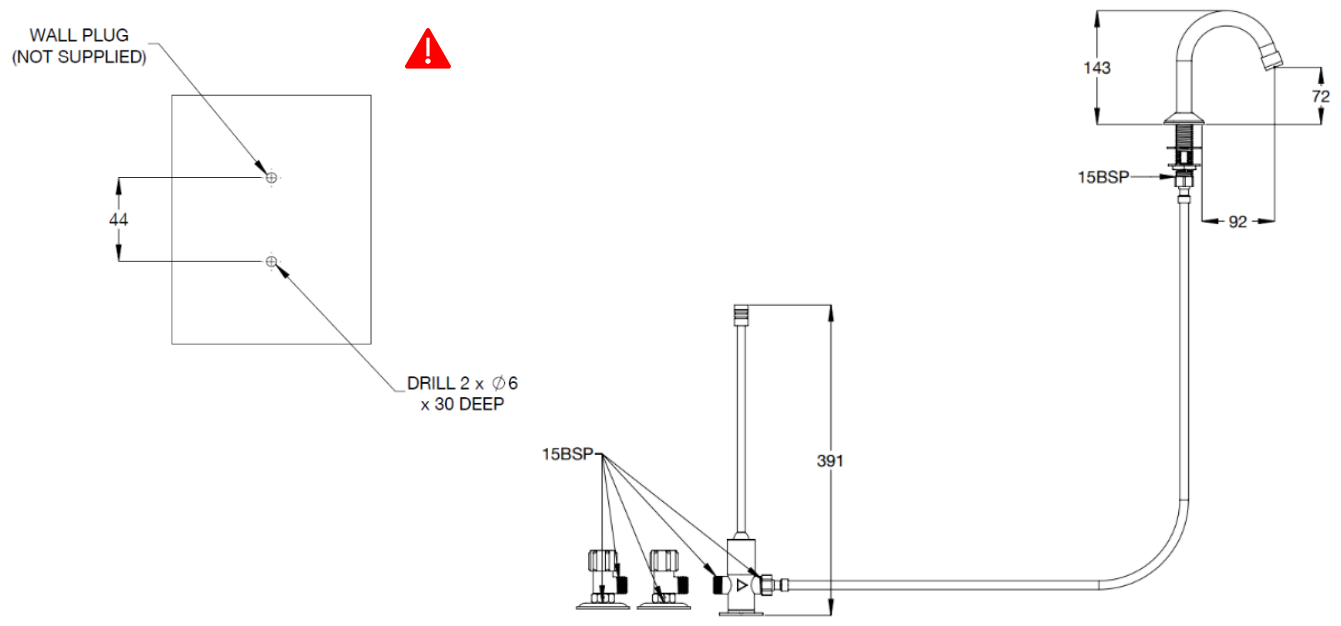
NOTE: Galvin Engineering continually strive to improve their products. Specifications may change without notice.

TOOLS REQUIRED

- Spanner or adjustable crescent
- Screwdriver
- Power Drill

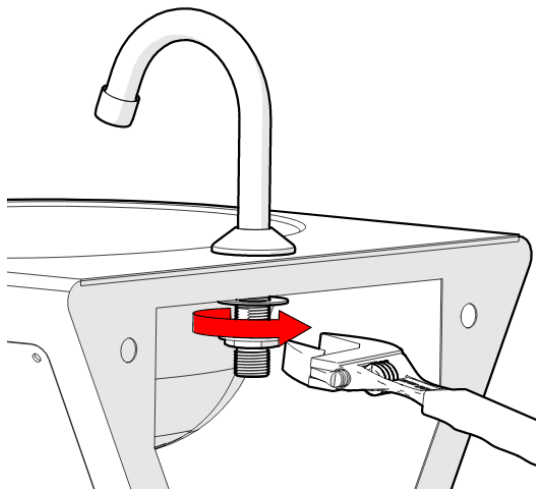
PRE-INSTALLATION - MOUNTING DETAILS

Note: If the mounting holes do not already exist, mark out and drill the holes, as shown in rough-in dimensions.



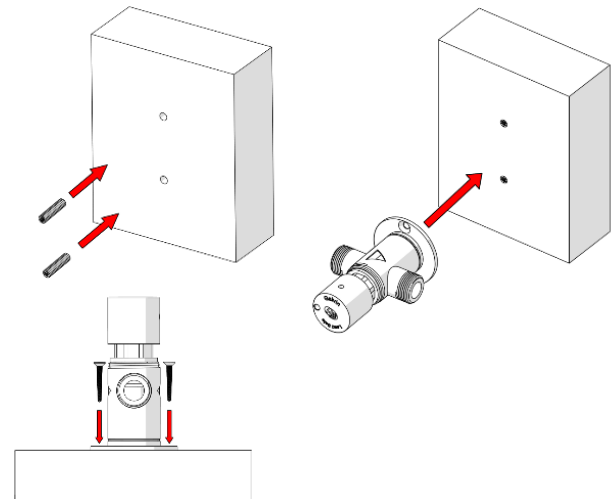
INSTALLATION

INSTALLATION COMPLIANCE: Galvin Engineering products must be installed in accordance with these installation instructions and in accordance with AS/NZS 3500, the PCA and your local regulatory requirements. Water and/or electrical supply conditions must also comply to the applicable national and/or state standards. Failing to comply with these provisions shall void the product warranty and may affect the performance of the product.



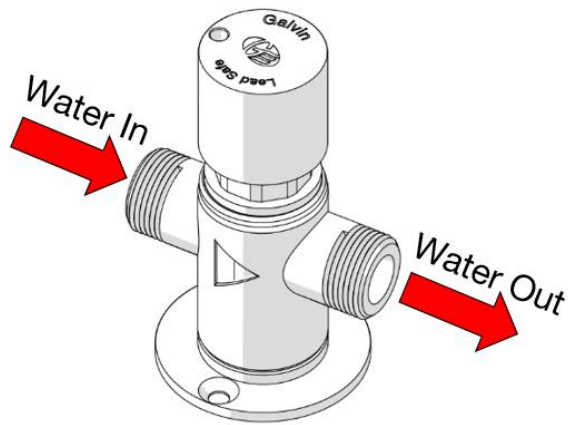
1. Gooseneck fitting

- Fit the Gooseneck body onto the basin.
- Fit the rubber washer then back nut and tighten.



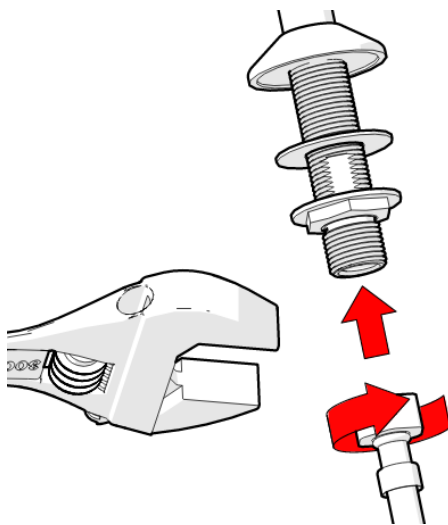
2. Mounting wall valve

- Ensure the wall plug holes are as per rough-in dimensions above.
- Fit wall plugs (not supplied).
- Secure the wall valve with suitable screws as shown.(not supplied).



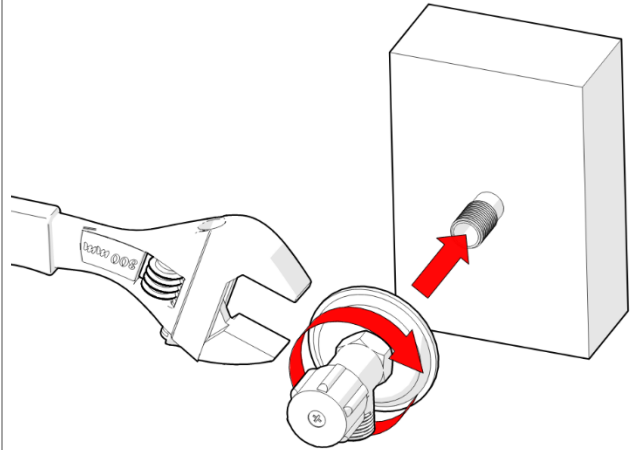
3. Water connection

- When applying thread tape or sealant to the inlet, ensure the opening is not obscured.
- Fit water connections as shown ensuring the water flow is as per the indicator marked on the valve body.



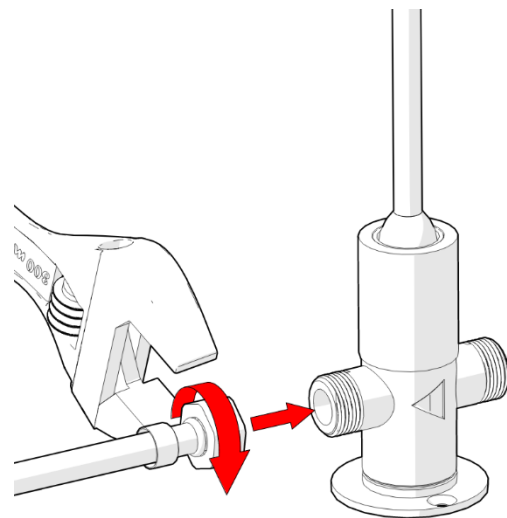
5. Connecting the hose

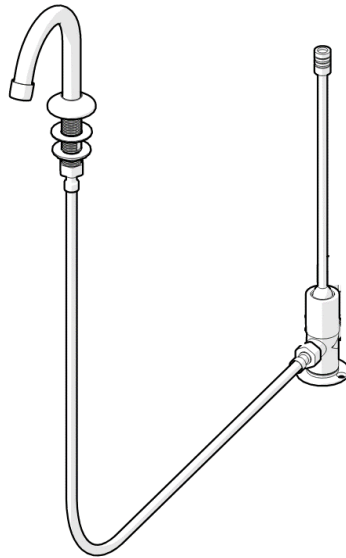
- Fit hose to Gooseneck and Valve as shown. Direction of flow indicated by arrow on body.
- When applying thread tape or sealant to the inlet, ensure the opening is not obscured.



4. Mounting wall valve (Hot & Cold)

- Two valves are supplied for installations requiring mixed temperature water.
- Fit valve as shown
- When applying thread tape or sealant to the inlet, ensure the opening is not obscured.



**7. Test unit**

- Turn on the water supply, inspect the tap and check for any leaks.

TROUBLESHOOTING

PROBLEM	CAUSE	RECTIFICATION
Water is not flowing from tap	Mains supply is turned off	Turn on mains supply.
Rate of flow inadequate.	The flow restrictor may not be satisfactory due to inadequate supply pressure.	Remove flow restrictor and replace with a flow restrictor of different capacity to suit (available from Galvin Engineering).
No time flow – water shuts off upon release.	Small spring at the bottom of the cartridge piston dislodged.	Relocate spring, regrease spindle if required.

WARRANTY

Galvin Engineering products are covered under our Manufacturer's Warranty. Galvin Engineering products must be installed in accordance with the installation instructions and in accordance with AS 3500 and NCC Volume Three, relevant Australian Standards and local authorities applicable to product being installed. Water and electrical supply conditions must also comply to the applicable national and/or state standards, failing to comply with these provisions may void the product warranty and affect performance of the product.

Please visit www.galvinengineering.com.au to view the full warranty, our Installation Compliance and Maintenance & Cleaning information as well as any other additional information.

Within Australia: **1300 514 074** Outside Australia: P: **+61 (0)8 9338 2344**

F: **+61 (0)8 9338 2340**

sales@galvinengineering.com.au

www.galvinengineering.com.au

ABN: 78 008 719 382

PERTH | SYDNEY | MELBOURNE | BRISBANE | ADELAIDE

